
NOTE: This article and all content are provided on an "as is" basis without any warranties of any kind, whether express or implied, including, but not limited to the implied warranties of merchantability, fitness for a particular purpose, and non-infringement. In no event shall Wonderware North be liable for any special, indirect or consequential damages or any damages whatsoever resulting from loss of use, data or profits, whether in an action of contract, negligence or other tortuous action, arising out of or in connection with the use or performance of information contained in this article.

Introduction

The Wonderware Information Server offers an easy solution for aggregating and presenting plant production and performance data over the web or company intranet. Plant personnel, with a minimum of training, can install, configure and implement a highly effective plant information web site without the need for custom web programming. Using Information Server, large amounts of process data can be aggregated into highly informative production reports tailored to the information needs of plant personnel. Content from the Wonderware Information Server can be incorporated into other web portals, making existing corporate IT portals more informative and valuable.

Key Benefits

- Access to Key Performance Indicators (KPI) anywhere
- Improve plant performance
- Reduce production costs
- Increase responsiveness to market opportunities
- Productivity and workforce improvements

Administrative Access to the Portal Configuration

The Administration Link shown in Figure 1 allows for Wonderware Information Server web portal configuration for items such as adding Process Graphics, setting up Data Sources, creating MultiViews and Table Weaver Content and configuring user's rights. The administrative user that installed Information Server is given rights to the Administration Link in Wonderware Information Server. This Tech Tip describes how to grant additional users access to the Link.

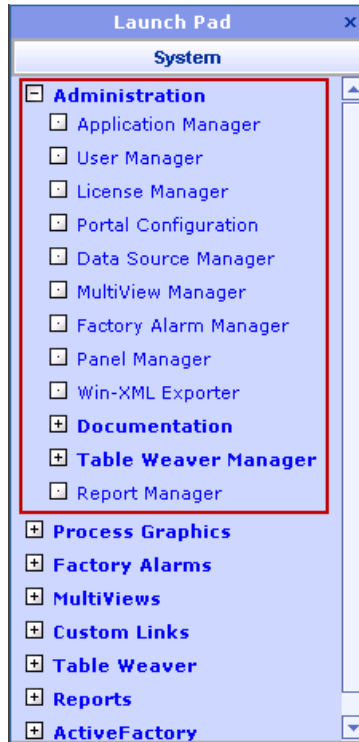


Figure 1. Launch Panel with access to the Administration Link.

Adding Users to the Wonderware Information Server Administration Link

By default only the administrative user who installed Wonderware Information Server has rights to the Administration Link in the Launch Pad. All other users, even if they are local administrators, do not have access to the link. For these users the Information Server Launch Pad appears without the link as in Figure 2.



Figure 2. Launch Panel without access to the Administration Link.

To add additional users, open Component Services through Administrative Tools in the Control Panel (Figure 3).

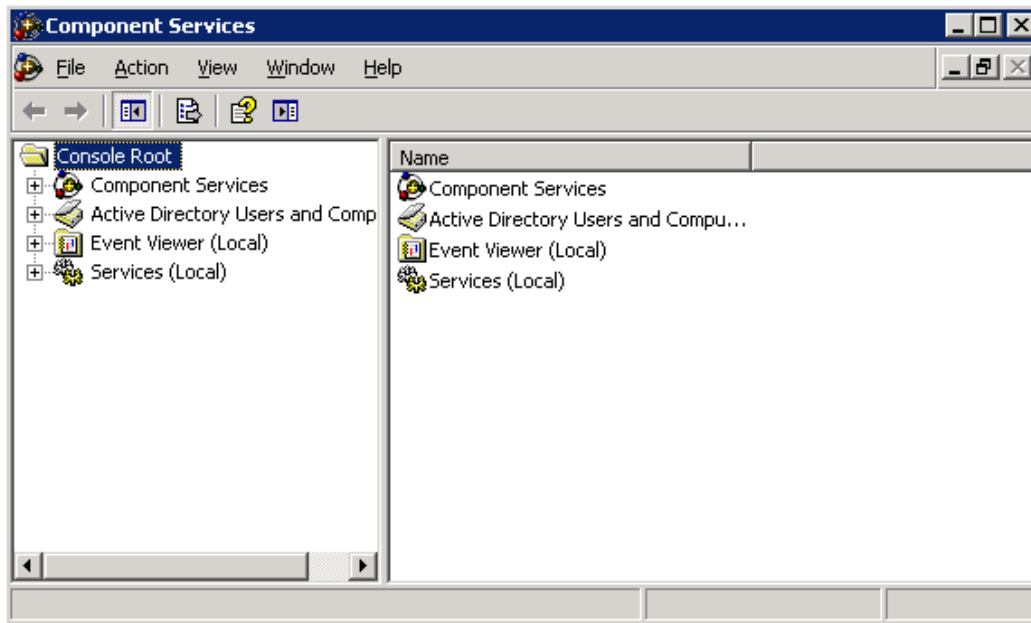


Figure 3. Component Services.

Click on Components Services under Console Root to expand it. Expand Component Services->Computers->My Computer->COM+ Applications->Wonderware SuiteVoyager->Roles->Administrator->Users (Figure 4).

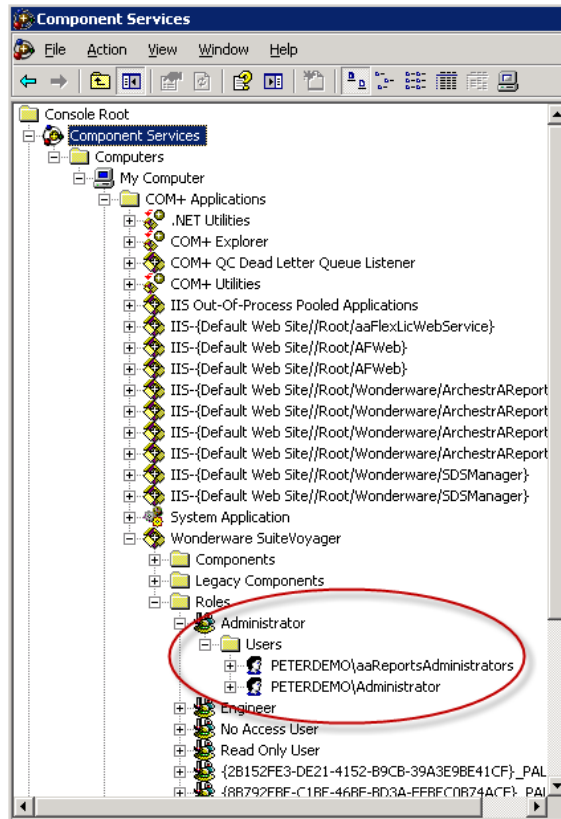


Figure 4. Expanded Component Services.

Right-click on Users and select New->User as shown in Figure 5.

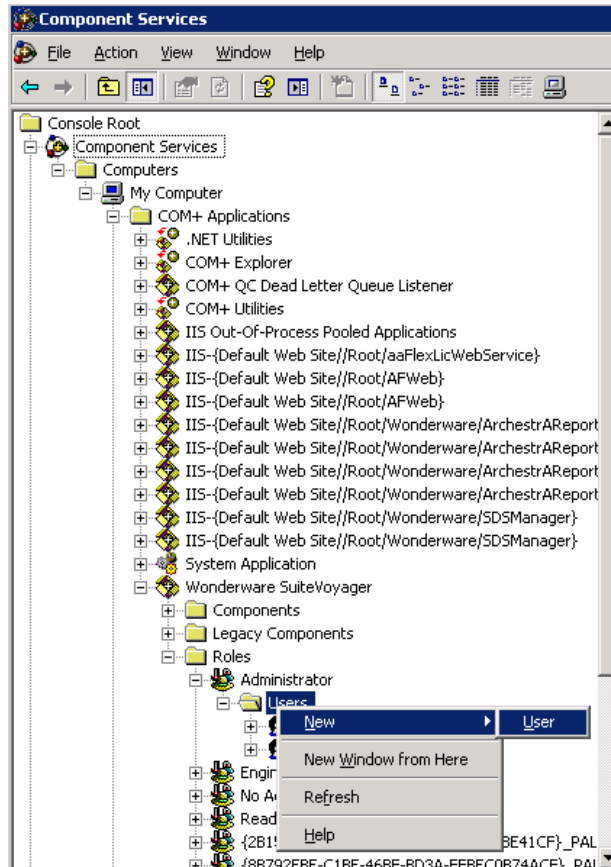


Figure 5. Adding a new user to the Information Server Administrator Role.

Select the user you want to add and click OK (Figure 6). The new user will then be added under Roles->Administrator->Users. The Administration link as shown in Figure 1 will now be accessible to the newly added user the next time the user logs into Information Server.

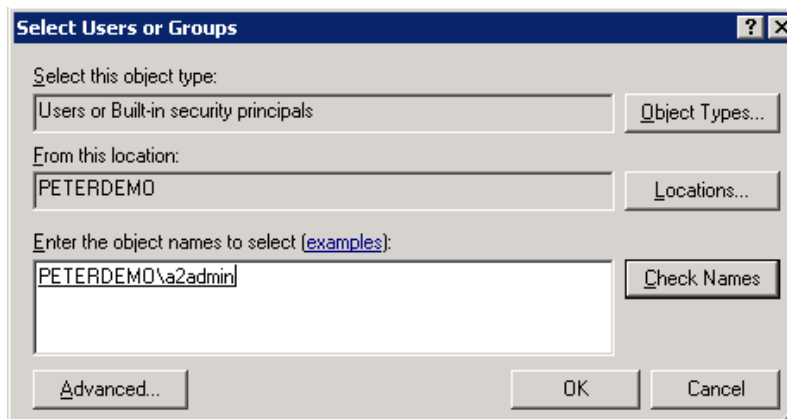


Figure 6. Selecting the user to add as an Information Server administrator.