

NOTE: This article and all content are provided on an "as is" basis without any warranties of any kind, whether express or implied, including, but not limited to the implied warranties of merchantability, fitness for a particular purpose, and non-infringement. In no event shall Wonderware North be liable for any special, indirect or consequential damages or any damages whatsoever resulting from loss of use, data or profits, whether in an action of contract, negligence or other tortious action, arising out of or in connection with the use or performance of information contained in this article.

Purpose:

The Wonderware DASABCIP Server is an OPC Server used for connectivity via Ethernet to the Allen Bradley ControlLogix family. It may also be used for connection to CompactLogix, FlexLogix, and MicroLogix. The SLC500 may also be accessed.

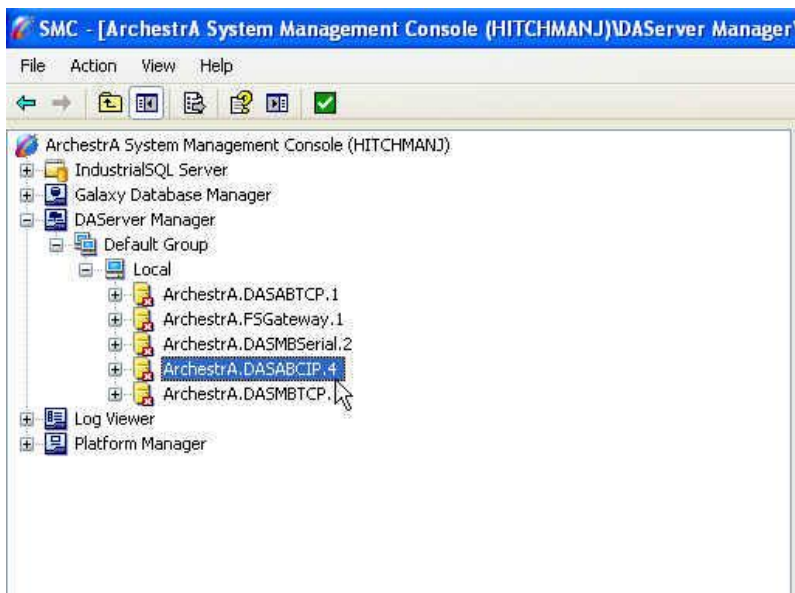
Procedure:

The following is a typical example connecting to a **ControlLogix** PLC. The DASABCIP can be found on the *Wonderware Device Integration DVD*; the software downloads section at the Wonderware Website -

<http://www.wonderware.com/support/web/secure/downloads/esdownload.asp>.

Note: Make sure you can "ping" the PLC prior to testing the DAS Server.

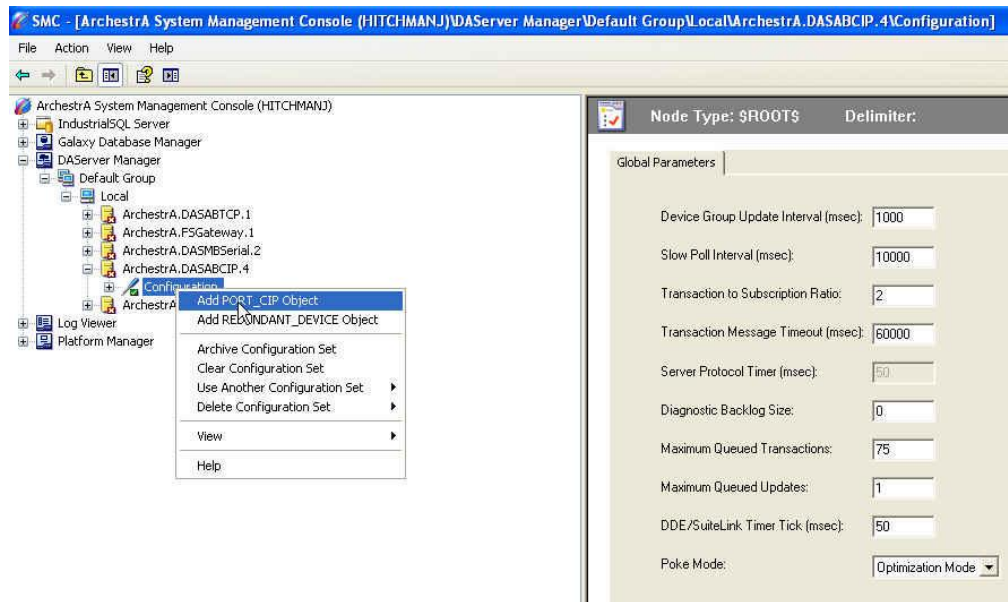
1. After the DASABCIP is installed, go to **Start/All Programs/Wonderware/System Management Console (SMC)**.
2. In the **SMC**, locate the DAServer Manager and drill down through Default Group/Local to **ArchestrA.DASABCIP.4**



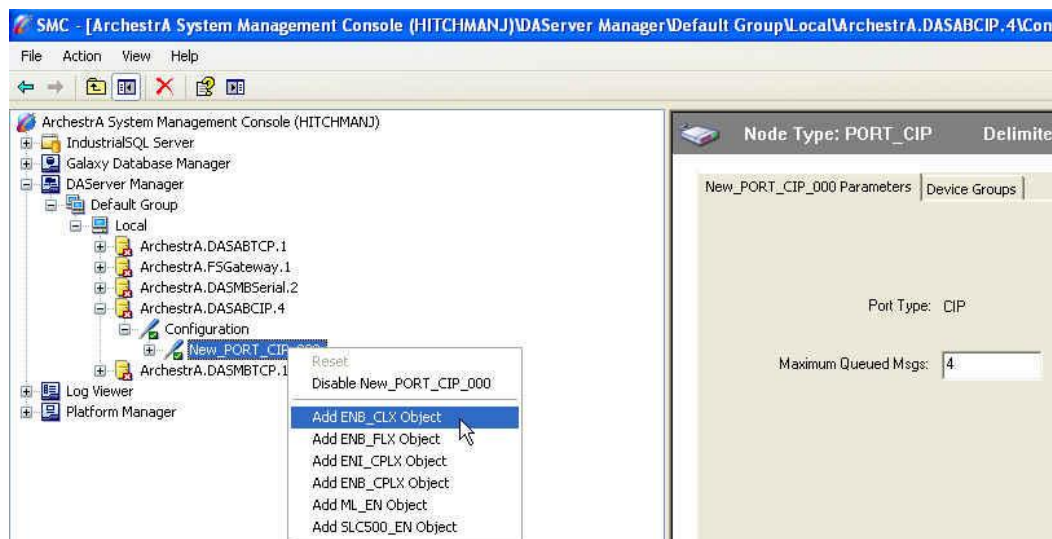
Configuring the DASABCIP IO Server (V 4.x)

*NOTE: If you install the DAS Server and you do not see it under the DAServer Manager, this may be a security issue. Go to **Start/Programs/Wonderware/Common** and run the **ChangeNetwork Account utility**. When enabling the Change Network Account Utility, use or create a user name that has local administrator rights on the PC.*

- Drill down and open the first level, **Configuration**, as shown. Nothing is typically done here. Right mouse click on **Configuration** and select (**Add PORT_TCPIP Object**)

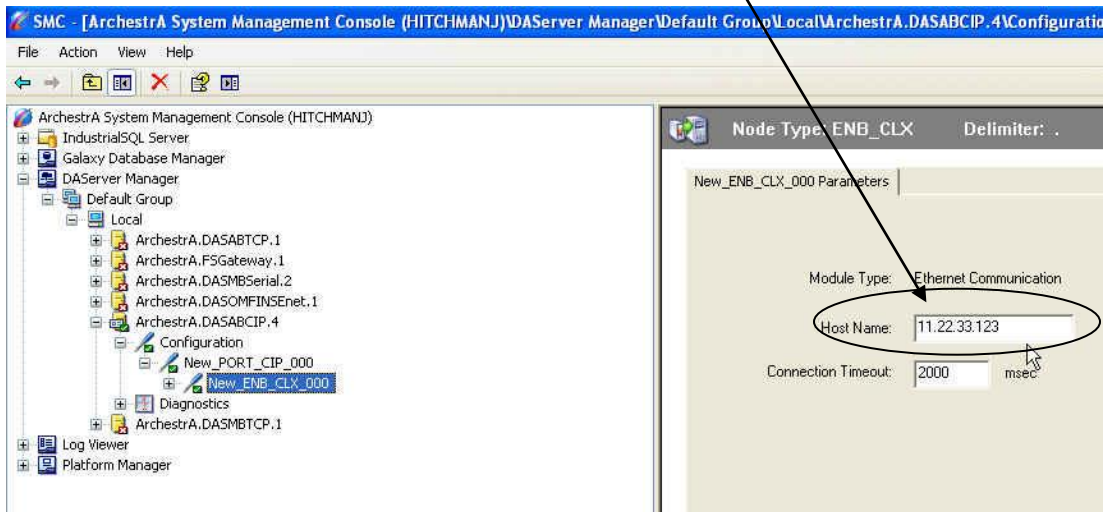


- Right mouse click on **New_PORT_CIP_000** and select (**Add ENB_CLX Object**)

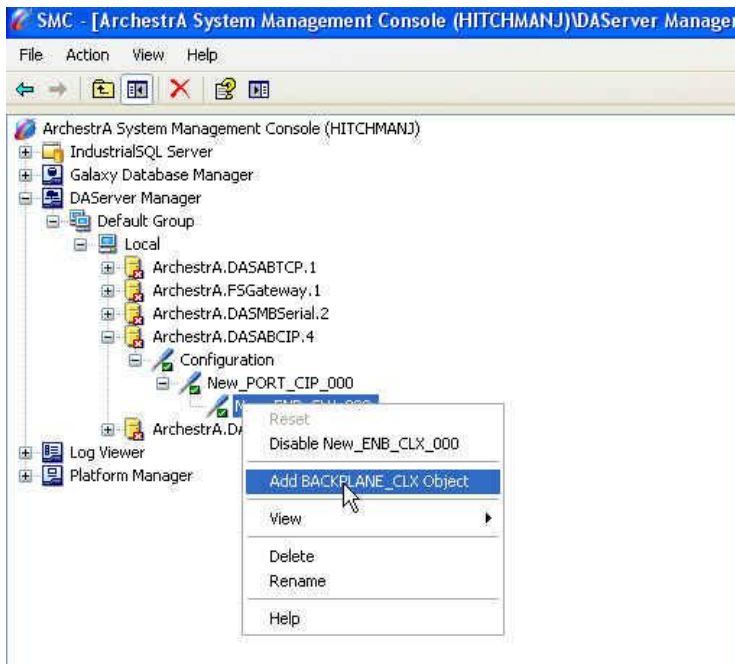


Configuring the DASABCIP IO Server (V 4.x)

5. Enter the PLC IP Address (i.e. 11.22.33.123) where it says "Host name" as shown

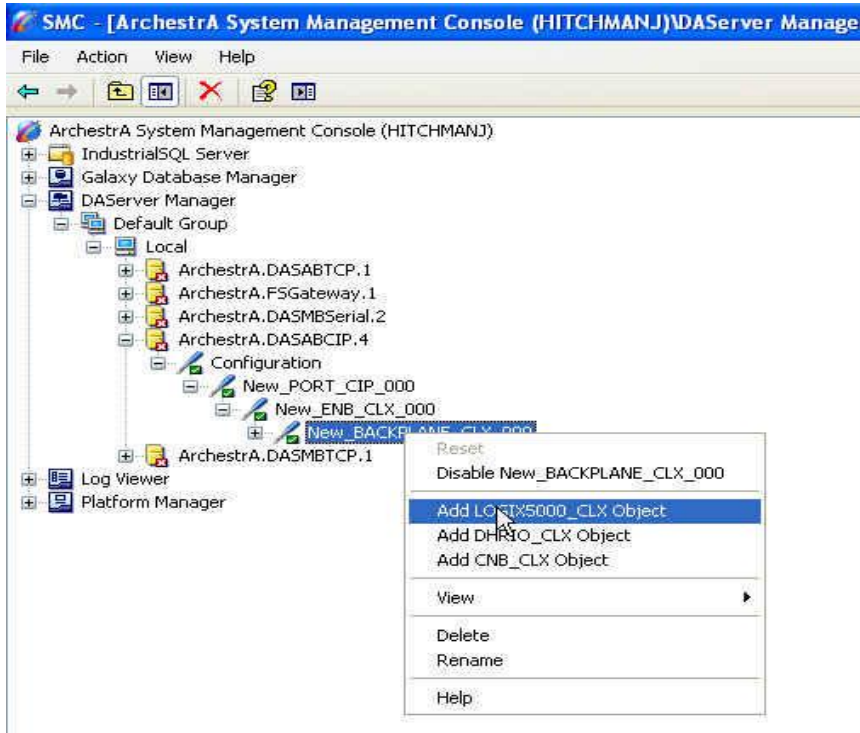


6. Right mouse click on New_ENB_CLX_000 and select **Add BACKPLANE_CLX Object**

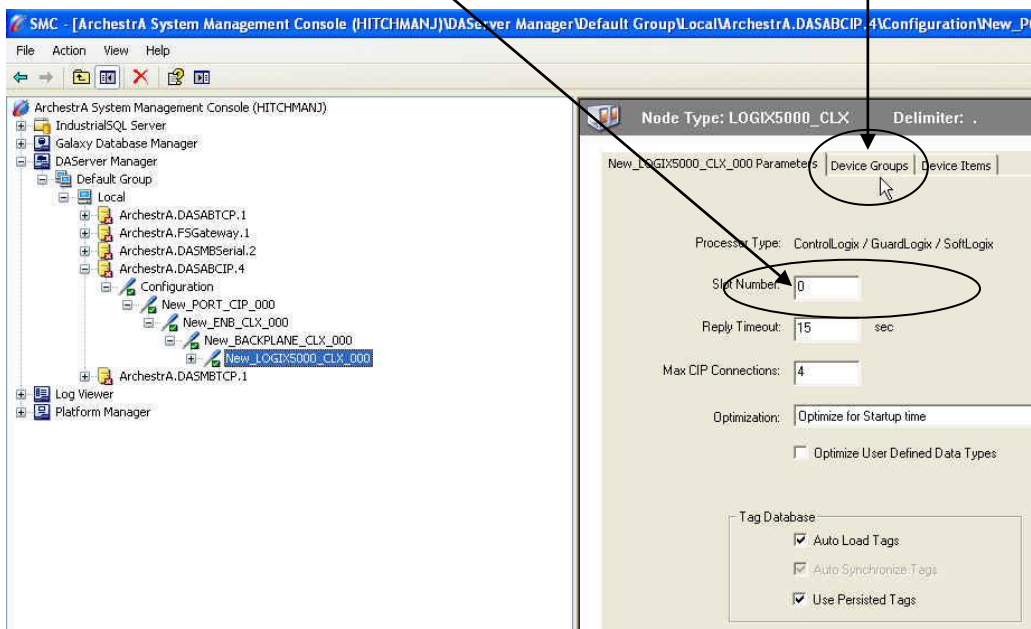


Configuring the DASABCIP IO Server (V 4.x)

- Right mouse click on New_BACKPLANE_CLX_000 and select Add Logix5000_CLX Object

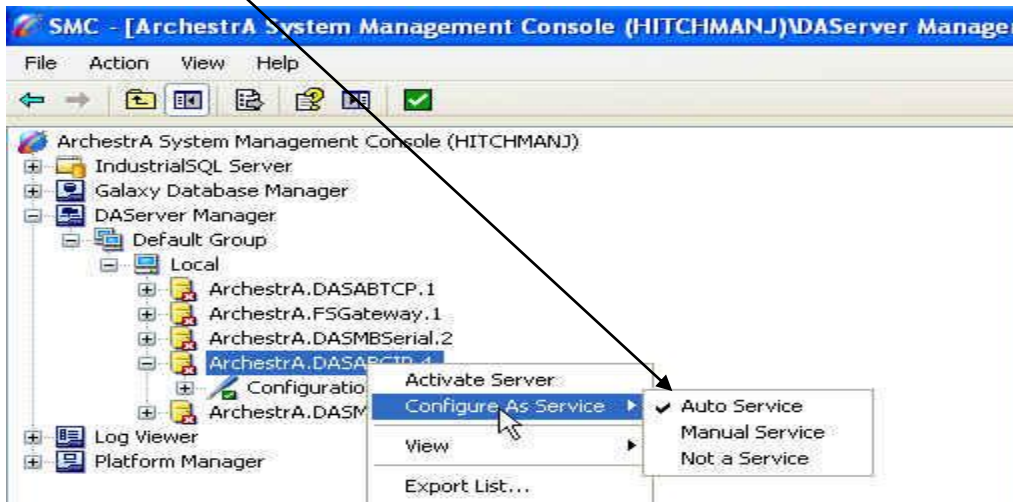


- Check that the CPU Slot number (default 0) is correct. Then select the Device Groups Tab

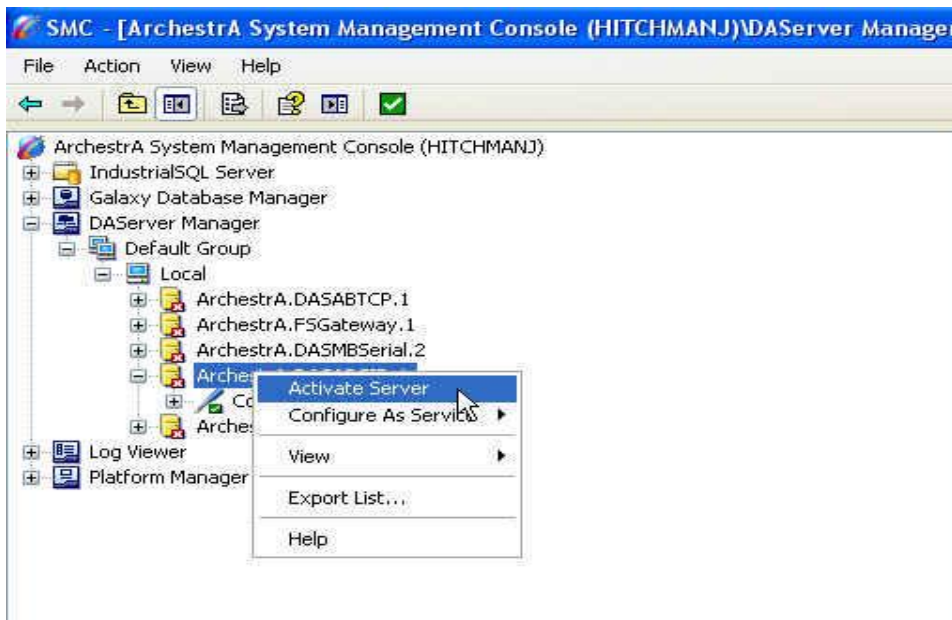


Configuring the DASABCIP IO Server (V 4.x)

9. In the open area, right mouse click and select "add". Rename the default "Topic_0" to (i.e. ABPLC) and hit the Save Icon in the upper RIGHT corner (floppy disk).
10. Go back to ArchestrA.DASABCIP.4, right mouse click to check that the server is configured as an **Auto Service**.



11. Select "Activate Server"



12. The Green box with the white Check indicates the Server is now active

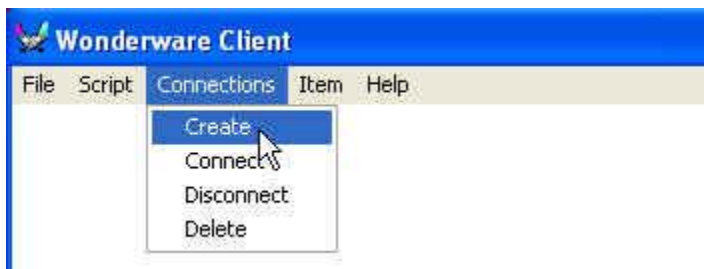


Test with WWClient:

WWClient is a free DDE/SuiteLink utility provided by Wonderware that can be found by the following:

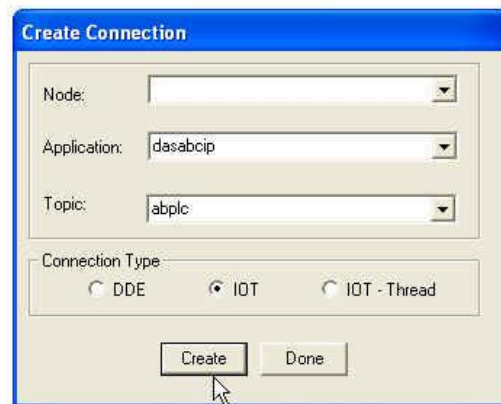
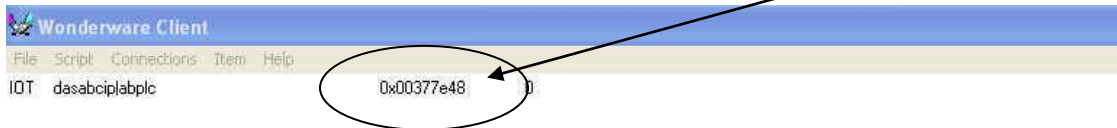
- If you have loaded any legacy products, go to **Start/Programs/Wonderware FactorySuite/Common**
- On the Device Integration Products CD/DVD in the *WW/Diagnostic Utilities* folder. Extract the contents of the file to your desktop.
- Go to the Wonderware website to <http://www.wonderware.com/support/web/secure/downloads/esscript.asp> under **General Utilities**.

1. Open WWClient and select Connections/Create:



Configuring the DASABCIP IO Server (V 4.x)

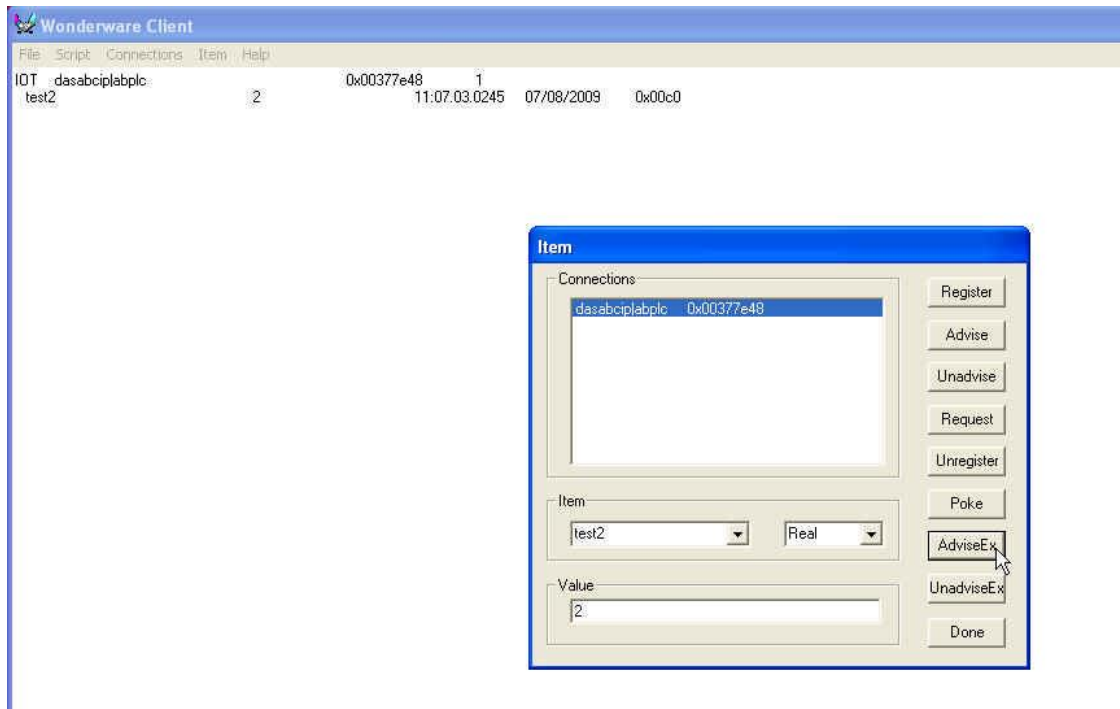
- The **Node Name** should be the Computer Name or IP Address of the PC where the DASABCIP is installed and running (leave blank or enter *localhost* if DAS Server is on the same PC as WWClient/InTouch),
- The **Application** is DASABCIP
- Topic** (i.e. ABPLC).
- Select **IOT** (stands for SuiteLink). Hit the Create button. The important thing is that you see a non-zero connection number (i.e. 0x00377e48). If this number were all zeros, check for corrections in either spelling or topic names.



- Select **Done**.
- Now select "item" from the top menu (next to Connections). In the item menu, go to where you can enter an item in the lower LEFT. Prior to this, make sure a valid register or bit had been entered in the PLC logic. For this note, a float called "Test" has been created in the PLC logic. This is a Controller Tag. Had this been a Program Tag in a program folder called (i.e. Main) then the item name would have been **Program:Main.Test**.
- Choose the data type (Real) and then select the "AdviseEx" button to the RIGHT. You should see the item, a value, time and date, and quality of **0x00c0** means good quality. Any other quality value may suggest reviewing the configuration in the DAS Setup.

Configuring the DASABCIP IO Server (V 4.x)

You can test entering values to the PLC by entering a value in the Value area at the very bottom and using the “Poke” button directly above the AdviseEx button.



Notes: The DAS Servers are OPC servers. The Device Items tab, seen in the last level in the DAS configuration, is typically used for creating an item list to expose data for OPC Clients. Since the DAS Servers communicate via DDE/SuiteLink these items are not needed to be configured for normal InTouch interfacing.

For more information, after installing the DASABCIP, go to the Help/Help Topics in the System Management Console.