

*NOTE: This article and all content are provided on an "as is" basis without any warranties of any kind, whether express or implied, including, but not limited to the implied warranties of merchantability, fitness for a particular purpose, and non-infringement. In no event shall Wonderware North be liable for any special, indirect or consequential damages or any damages whatsoever resulting from loss of use, data or profits, whether in an action of contract, negligence or other tortious action, arising out of or in connection with the use or performance of information contained in this article.*

## Purpose:

Terminal Services, also known as Remote Desktop Services, allows a user to have full, secure access to applications and data on a remote computer over a network. This network includes the iPhone, iPad, or iPod wireless connection or the iPhone and iPad data (3G or Edge) network. Using this type of connection a user can remotely view Wonderware's InTouch HMI application, on their iDevice from any location. The example screen snapshots are using an iPhone.

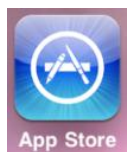


**Figure 1: Reactor Window accessed via iPhone**

The benefit of this type of configuration is that only the user interface of the application is presented to the client. Any input is redirected over the network to the server, where all application execution takes place. This would be similar to, if the user was actually sitting in front of the server itself and interacting with the application.

## Procedure – Install and configure an RDP client on the iPhone:

1. Download and install your favorite RDP application for the iPhone from the App Store. For this example, I will demonstrate using the application **WinAdmin**.

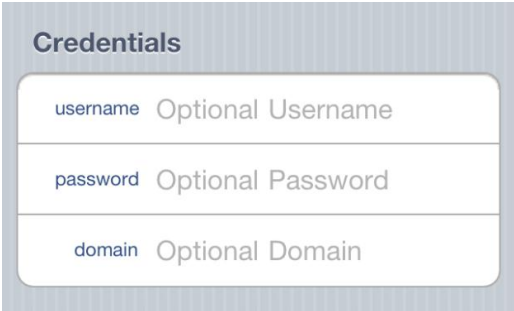


2. Configuration for WinAdmin is as follows, other RDP clients would be similar:

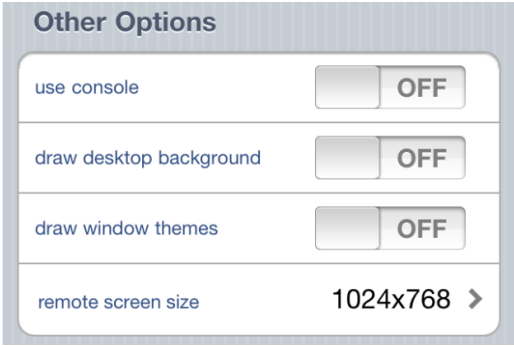
| Name     | Description   |
|----------|---|
| Title    | Name of your connection as displayed within the RDP interface.  |
| HostName | IP Address or fully qualified DNS of the Terminal Server  |
| Port     | Port number the Terminal Server is listening on. The default is 3389.   |
|          | <div data-bbox="574 926 1084 1392" style="border: 1px solid #ccc; padding: 10px; background-color: #f9f9f9;"> <p><b>Name and Address</b></p> <div style="border: 1px solid #ccc; padding: 5px; margin-bottom: 5px;"> <p>title My New Server</p> </div> <div style="border: 1px solid #ccc; padding: 5px; margin-bottom: 5px;"> <p>hostname IP Address or DNS</p> </div> <div style="border: 1px solid #ccc; padding: 5px;"> <p>port 3389</p> </div> <p>Server hostname should be an IP Address or a Fully Qualified DNS Name (e.g. hostname.domain.com). The default port for remote desktop sessions is 3389.</p> </div> |



3. Configuration continues as follows for login information:

| Name     | Description  |
|----------|--|
| Username | Username on the remote server.   |
| Password | Password on the remote server.   |
| Domain   | Domain logging into on the remote server. Not required.                            |
|          |  |

4. Final configuration for options:

| Name                    | Description   |
|-------------------------|---|
| Use Console             | By enabling this, the user is activating the same desktop in which the user will see when standing in front of the monitor.                       |
| Draw Desktop Background | Enabling this will display the desktop background within the client. By default this is off and should remain off for performance.                |
| Draw Window Themes      | Enabling this will display the Window's Themes within the client. By default this is off and should remain off for performance.                   |
| Remote Screen Size      | What resolution should the client connect to the server using. With the zooming and scrolling capability of the iPhone, this is not a limitation. |
|                         |   |

Once the final configuration is completed for the individual servers, now opening the WinAdmin application, the user will be presented with a list of servers to connect to. Selecting the server will initiate the connection and open a remote session to the selected server and the interface will appear similar to that in Figure 1. A shortcut to WindowViewer can be included in the startup group for the user's profile to automatically open InTouch WindowViewer if desired. The default configuration would present the user with the standard Windows desktop and set of icons.

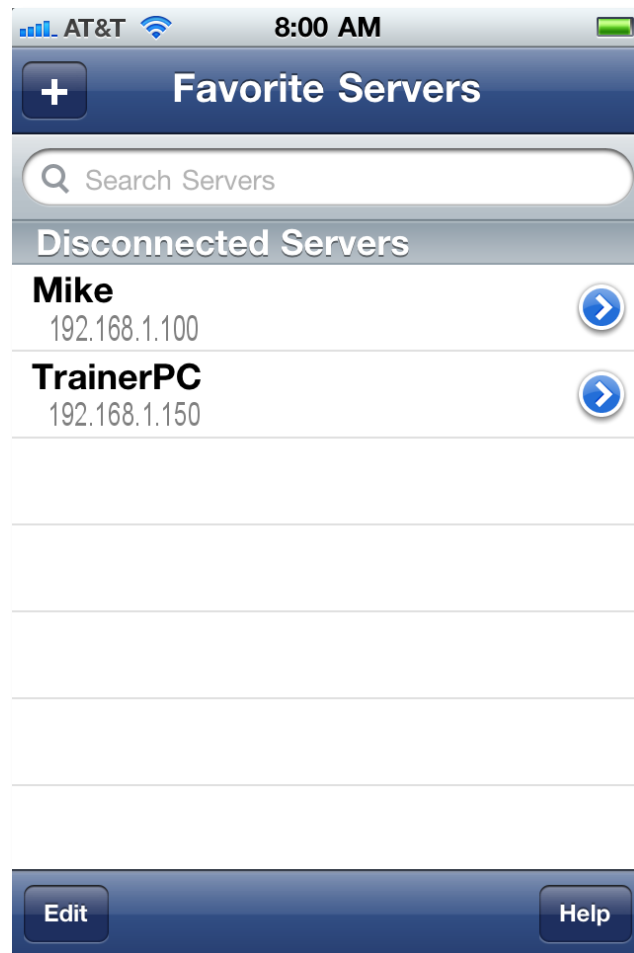


Figure 7: WinAdmin list of available servers.