
NOTE: This article and all content are provided on an "as is" basis without any warranties of any kind, whether express or implied, including, but not limited to the implied warranties of merchantability, fitness for a particular purpose, and non-infringement. In no event shall Wonderware North be liable for any special, indirect or consequential damages or any damages whatsoever resulting from loss of use, data or profits, whether in an action of contract, negligence or other tortious action, arising out of or in connection with the use or performance of information contained in this article.

Purpose:

Recently we had a customer pose the question "How can I keep users from shutting down InTouch?" The simple answer is to use the security settings in InTouch to completely lock down the PC. Unfortunately, in this case the PC was used for other applications as well so in some rare cases a user would accidentally close down the InTouch application without realizing it. This would result in data loss until the shutdown was discovered.

It turns out there is a very easy way to accomplish this with a little known Windows utility called Windows Task Scheduler. You can find this utility in All Programs\Accessories\System Tools\Scheduled Tasks. This utility is available in all versions of Windows.

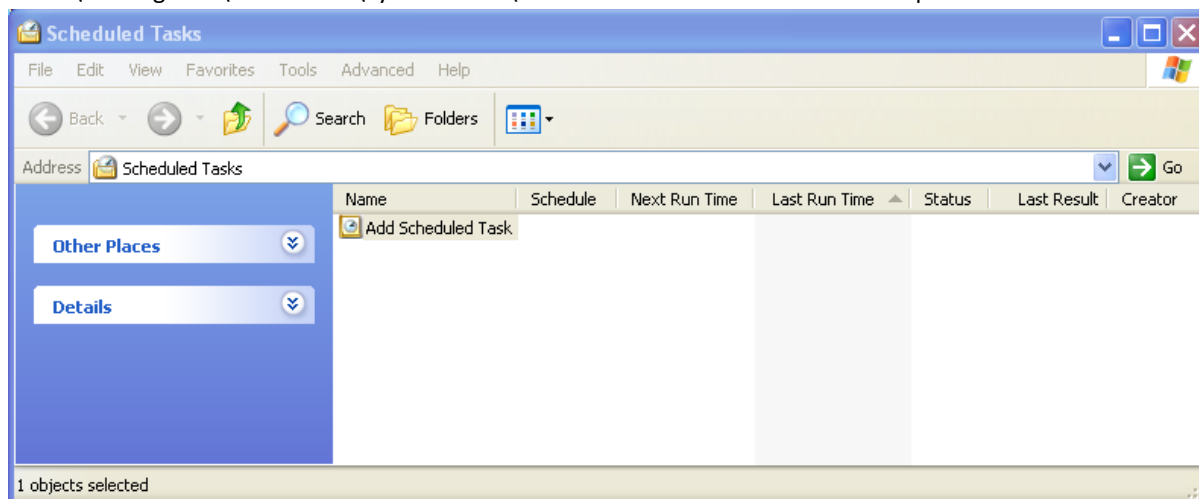
This tip will demonstrate how to use the Task Scheduler to check to see if InTouch is running and if not start it. In order to accomplish this we first need to create a VB Script to check the status of InTouch and restart the view.exe application if necessary. The following procedure does just that.

Procedure:

1. Create the script file that will be used to check and restart WindowViewer as needed. This can be created in a text editor like Notepad:

Name:	CheckView.VBS
Script:	<pre>set Service = GetObject ("winmgmts:") set Shell = WScript.CreateObject("WScript.Shell") sEXEName = "view.exe" sApplicationPath = "c:\progra~1\wonderware\intouch\" bRunning = false 'Look for our application. Set the flag bRunning = true If we see that it is running for each Process in Service.InstancesOf ("Win32_Process") if Process.Name = sEXEName then bRunning=true End If next 'Is our app running? if (not bRunning) then 'No it is not, launch it Shell.Run sApplicationPath & sEXEName end if</pre>

2. The next thing we need to do is to call this script as a Scheduled Task. To do this we need to start the Task Scheduler in START\All Programs\Accessories\System Tools\Scheduled Tasks. Then follow the steps below.



TechTip: Using Windows Task Scheduler to monitor if WindowViewer is Running



3. Click on Add Scheduled Task.



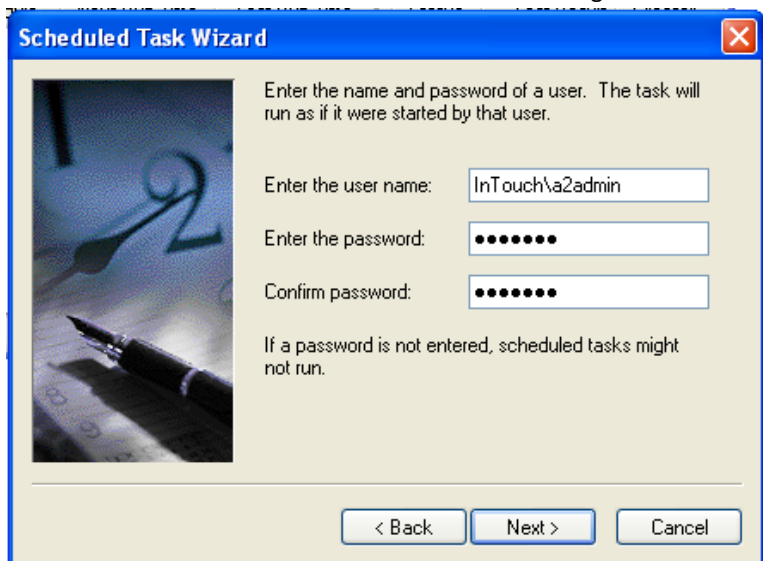
4. Browse to the location of the CheckView.VBS and click Next



5. At this point you should select Daily. You will be able to change this once the task has been created.



6. At this point, select a user account that has the ability to run a VB Script. You will have an opportunity to change this later as needed. The account shown below is the Change Network Account user.



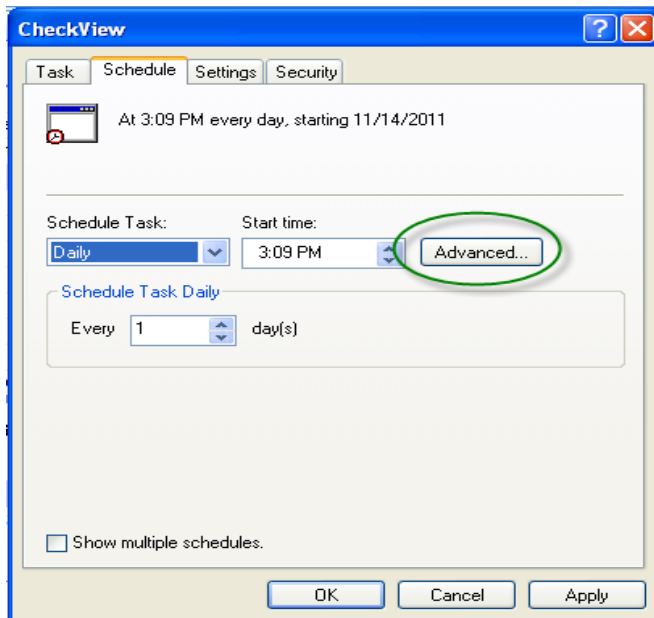
TechTip: Using Windows Task Scheduler to monitor if WindowViewer is Running



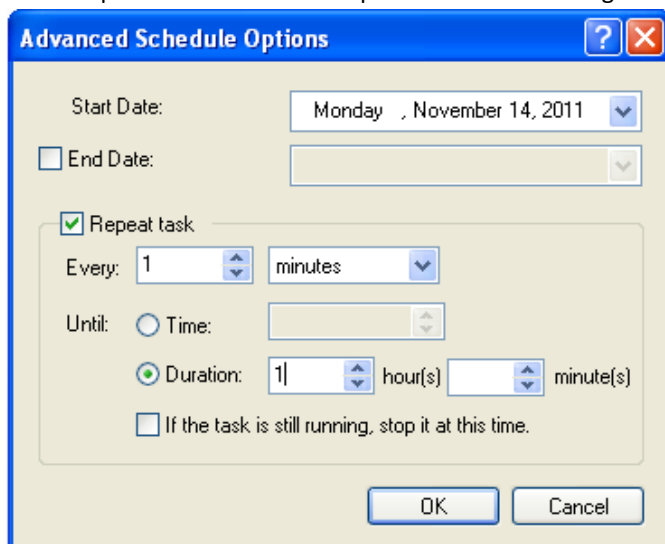
7. Click next and enable the Advanced Properties option.



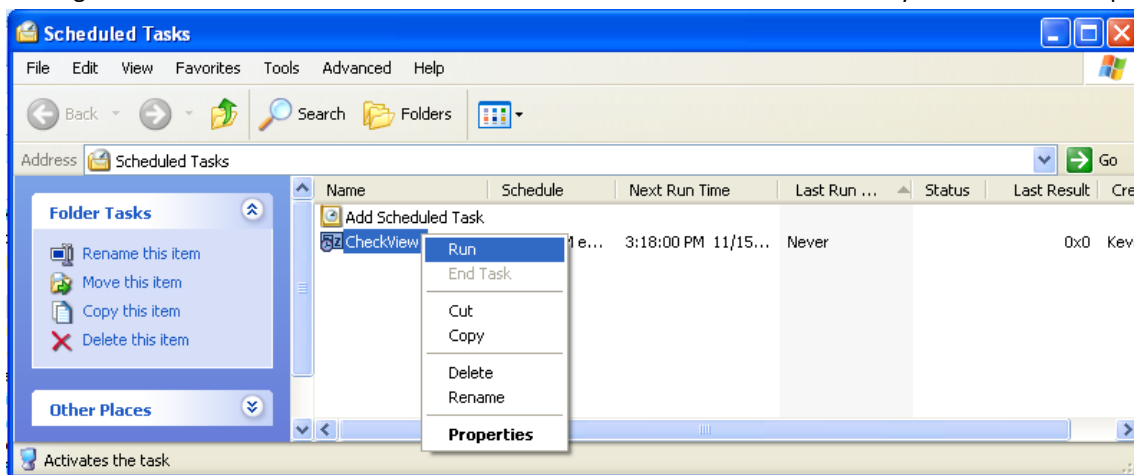
8. Click Finish and the Advanced Properties show. Select the Schedule tab and click on the Advanced button.



9. Select Repeat Task and set the repeat time to something acceptable. One minute is probably fast enough.



10. Once this is complete you need to right click on the task and select Run. The Task Window provides information on the running of the scheduled tasks. In order to shutdown InTouch Viewer in the future you will have to stop this task.



11. There is much more that can be done with the Windows Task Scheduler. You can find additional information at <http://technet.microsoft.com/en-us/library/bb742545.aspx>.